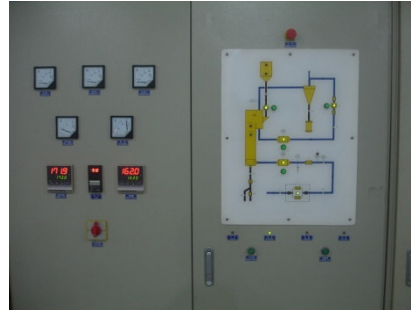


# Microfiber Yarn

# [www.cleanaide.com](http://www.cleanaide.com) Process



On the very top floor of the building, the raw material is mixed and extruded



The operation requires precise temperature monitoring



The fibers are flowing through multiple floors to control temperature and thickness



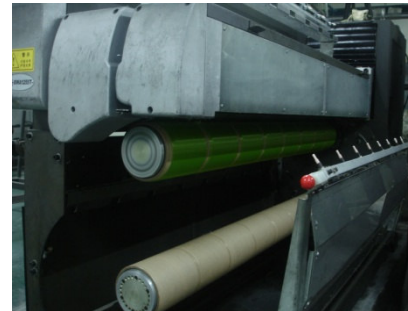
The individual fibers are then organized and combined to become a yarn



On the lower level, the yarn is prepared to be stored on temporary spools



The most common color of a microfiber yarn is white



Adding a dye to the individual fibers creates a colored yarn, This process is called dope dye



The temporary spools are stored before being respooled



The yarn is respooled several times in order to ensure consistent tension



The last respooling involves the yarn being spooled from side to side



The spool is then built to a consistent diameter



The finished spools are stored by color waiting for further processing or shipping